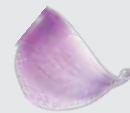
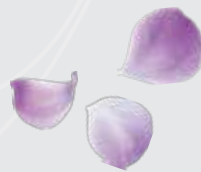




AIRASIA IS MOVING TO TERMINAL

4



EVERYTHING YOU
NEED TO KNOW ABOUT
CHANGI AIRPORT'S
NEWEST TERMINAL

**AIRASIA FLIGHTS WILL OPERATE AT
T4 FROM 5.30AM ON 7 NOVEMBER 2017**

The AirAsia logo, which is a red triangle with the word 'AirAsia' written in white cursive.

AirAsia will commence operations at
Singapore Changi Airport's new Terminal 4 (T4).

CHECK-IN OPTIONS

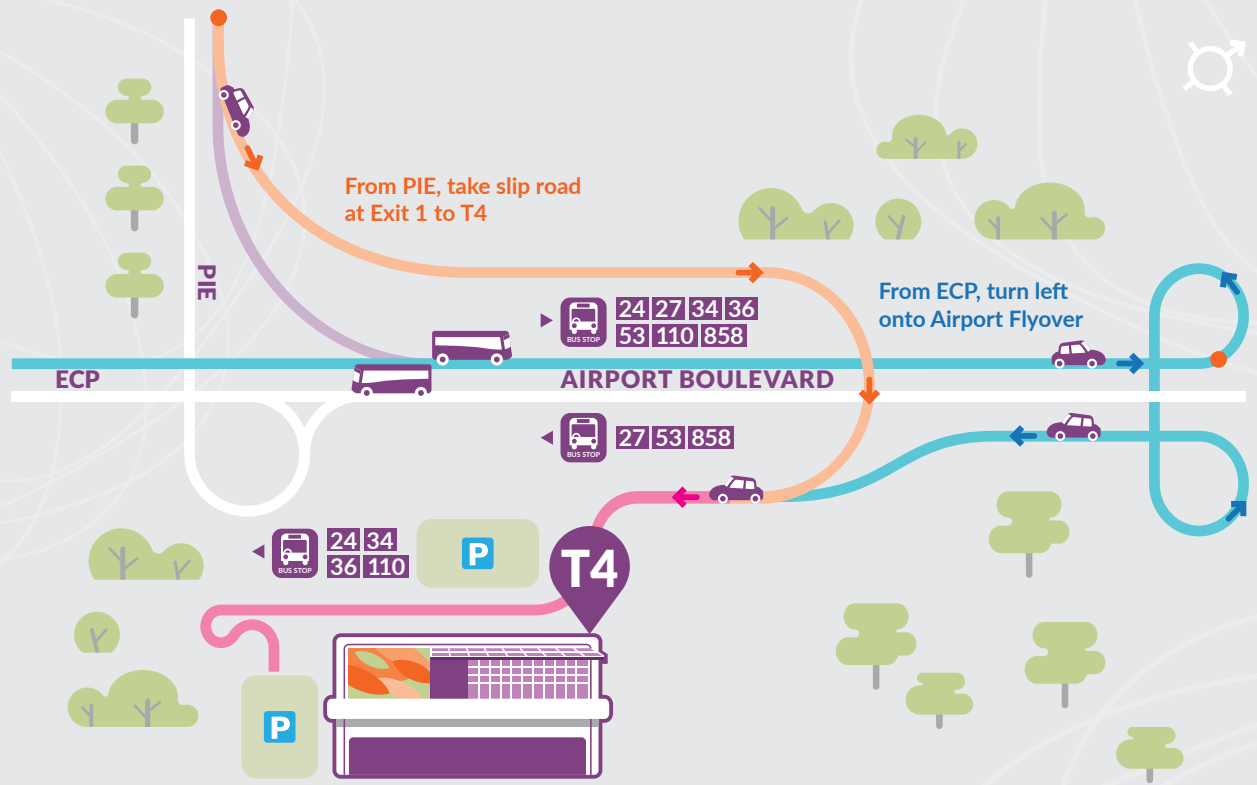
Self-service and conventional check-in options are
both available at T4 Row 4 and 5, between 5.30am
and 10.00pm daily.



CHANGI
airport singapore

the feeling is first class

Getting to and from T4



By Public Bus

- Bus services 24, 27, 34, 36, 53, 110 and 858



By MRT

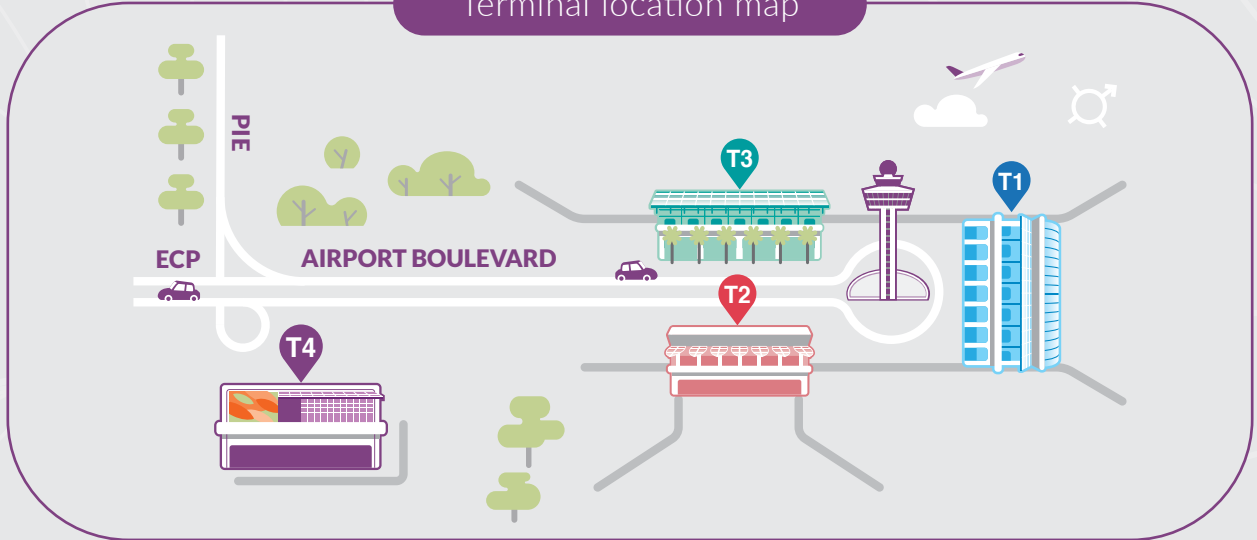
- Alight at Changi Airport Station.
- Go to T2 Arrival Hall door 1, board free 24-hour shuttle bus to T4.
- Journey takes about 10 minutes.
- Estimated waiting time for shuttle bus is 10 minutes from 5.30am to 12.00am, and 20 minutes from 12.00am to 5.30am.



By Car and Taxi

- PIE - Take slip road at Exit 1 to T4.
- ECP - Take exit along Airport Boulevard to T4.

Terminal location map



FAST Check-in

T4 is the first terminal at Changi Airport to offer Fast and Seamless Travel (FAST) self-service options at all key departure touch points - check-in, bag drop, immigration and boarding. Enjoy checking in at your own convenience. Visit <http://t4.changiairport.com/FAST-guide> for more information.

Key Facilities

Shop and dine

- Over 80 retail outlets in T4, with over 20 brands that are new to Changi Airport.
- Duty-free categories can be found in a single integrated duty-free zone immediately after immigration.
- Discover new F&B outlets at Changi.

The T4 Experience

Enjoy a visually immersive and theatrical experience at T4 with specially curated art and entertainment features.

- Petalclouds, a kinetic sculpture spanning 200m of the Central Galleria, will leave you mesmerised with its graceful movements to classical music.
- Located at the Centralised Security area, the Immersive Wall is a dynamic 70m long LED display that entertains passengers waiting in line.

Security Screening

Advanced 3D screening technology allows you to keep your laptops and tablets in your bag for a seamless hassle-free security check. Rules on hand-carried luggage including liquids, aerosols and gels apply.




- Tuck into traditional culinary delights or shop for local products and souvenir at the Heritage Zone.
- See our full shopping & dining directory at <http://t4.changiairport.com/shop-and-dine-guide>

- Witness the evolution of Singapore's shophouse architecture from the 1880s to the 1950s at the Heritage Zone.
- At the Heritage Zone, watch a six-minute cultural mini-theatre show, Peranakan Love Story, about an unlikely romance between two neighbouring families in Singapore in the 1930s.
- For more on the experience at T4, please visit <http://t4.changiairport.com/experience-guide>

Getting around T4

PUBLIC


 ACCESS TO FOOD & BEVERAGE AT LEVEL 2M

 **ATTRACTIONS**

- PETALCLOUDS
- HERITAGE ZONE
- IMMERSIVE WALL
- STEEL IN BLOOM

 **DINING**

 **SHOPPING**

 **SHUTTLE BUS TO T2 AND MRT**

 **INFORMATION**

 **TAX REFUND**

